

Pembroke a city rich in history offering the charm and hospitality of a small town life combined with easily available modern conveniences and amenities.

Nestled in the center of this gem is Pembroke Senior Village. Pembroke Senior Village is an independent-living affordable housing community reserved for adults 55+. The picturesque apartment community offers single-story apartment homes designed with comfort and convenience in mind.

Our community boasts of outdoor gazebo, picnic shelter and raised garden planters. The community clubhouse offers amenities such as computer center, game/craft room, fitness center and multi-purpose room. Services such as Meals on Wheels, Van Service and Community Assistance Program are just a few resident services available.

Reserve your new home today and come home to quality living-

Come home to...



PEMBROKE SENIOR VILLAGE

PEMBROKE SENIOR VILLAGE
21 South Spirit Drive
Pembroke, NC 28372
(910) 521-0015

PEMBROKESENIORVILLAGE@EPMSITES.COM



From Hwy. 711 turn on Candy Park Road, property located just off Candy Park Road on right.

Professionally Managed By



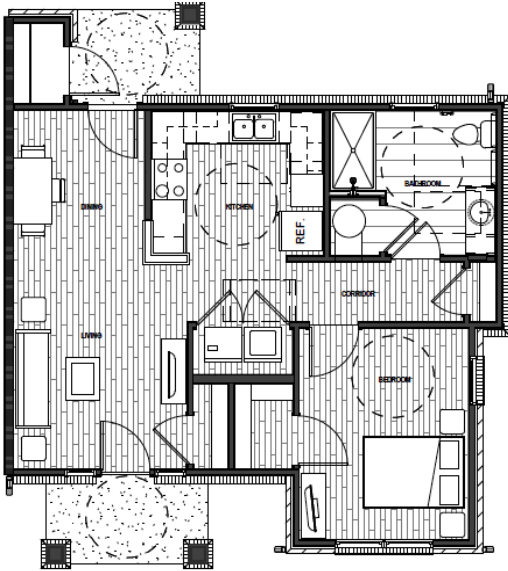
1004 Bullard Court, Ste. 106
Raleigh, NC 27615
(919) 878-0522



PEMBROKE
SENIOR VILLAGE

21 South Spirit Drive • Pembroke, NC 28372 • (910) 521-0015

ONE BEDROOM - 675 SQ. FT.



\$ _____ RENT

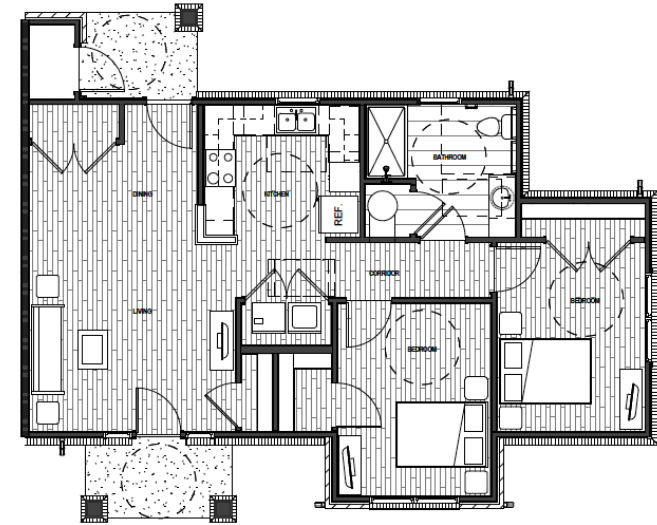
\$ _____ SECURITY DEPOSIT

\$ _____ APPLICATION FEE

APARTMENT FEATURES

- ◆ ENERGY EFFICIENT APPLIANCES, INCLUDING REFRIGERATOR, RANGE AND DISHWASHER
- ◆ WASHER & DRYER CONNECTIONS IN EACH UNIT
- ◆ PRIVATE ENTRANCES
- ◆ FRONT AND REAR PORCH/PATIO
- ◆ SINGLE STORY, BUNGALOW STYLE APARTMENT HOMES
- ◆ MINI-BLINDS
- ◆ WALK IN CLOSETS
- ◆ CEILING FANS
- ◆ ENERGY EFFICIENT, CENTRAL HEAT AND AIR CONDITIONING
- ◆ HANDICAP ACCESSIBLE UNITS AVAILABLE
- ◆ RENT INCLUDES WATER, SEWER AND TRASH REMOVAL
- ◆ RENTAL ASSISTANCE MAY BE AVAILABLE
- ◆ PROPERTY PARTICIPATES IN THE FEDERAL LIHTC PROGRAM TO KEEP RENTS AFFORDABLE- RESTRICTIONS APPLY

TWO BEDROOM - 901 SQ. FT.



\$ _____ RENT

\$ _____ SECURITY DEPOSIT

\$ _____ APPLICATION FEE