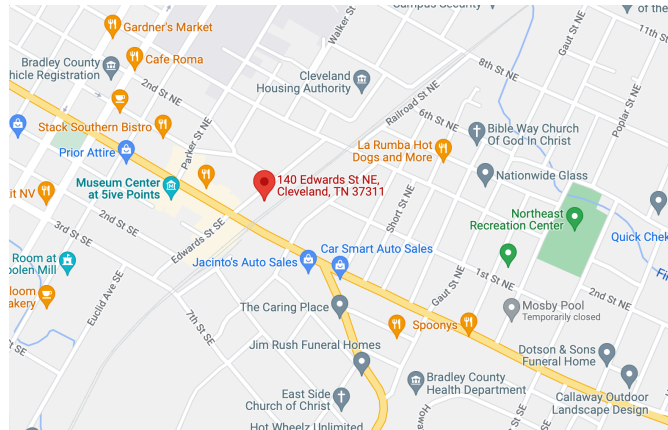


## COMMUNITY FEATURES

- AFFORDABLE HOUSING RENTAL COMMUNITY
- BEAUTIFUL, HISTORIC BUILDING CRAFTFULLY RENOVATED INTO 1 AND 2 BR APARTMENT HOMES
- GREAT DOWNTOWN LOCATION: CLOSE TO SHOPPING, DINING AND MORE!
- ORIGINAL HARDWOOD FLOORS THROUGHOUT
- FITNESS CENTER
- COMPUTER CENTER
- LAUNDRY CENTER
- CONTROLLED ACCESS TO BUILDING
- SMOKE FREE COMMUNITY
- PET FRIENDLY- WITH RESTRICTIONS
- ON-SITE MANAGEMENT AND MAINTENANCE

THE HISTORIC SANDA MILL LOFTS  
140 EDWARDS STREET SE  
CLEVELAND, TN 37311  
PH: (423) 790-0023  
FAX: (423) 790-0314

SANDAMILL@EPMSITES.COM



Conveniently located in the heart of downtown Cleveland on the corner of Inman Street E and Edwards Street NE. Walking distance to Catch Bar & Grill, Five Points Cafe and More.

Professionally Managed By



1004 Bullard Court, Ste. 106  
Raleigh, NC 27615  
(919) 878-0522



THE HISTORIC  
SANDA MILL LOFTS

## APARTMENT FEATURES



ONE BEDROOM / ONE BATH

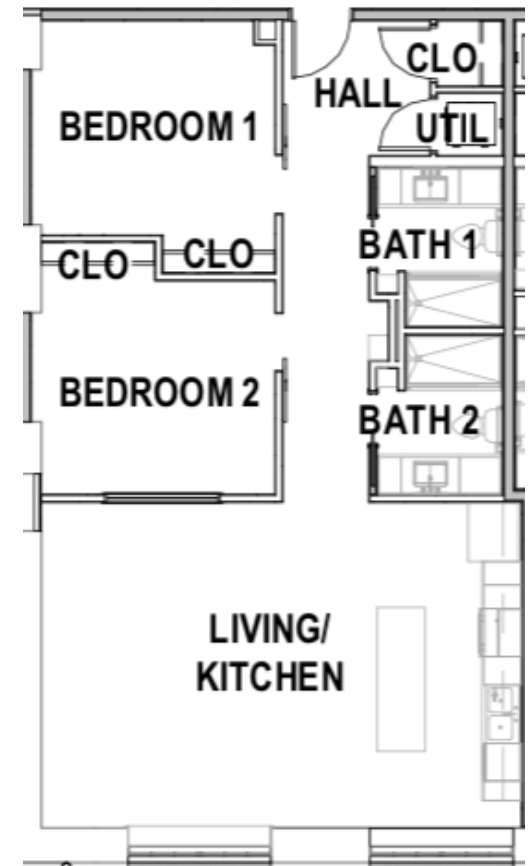
\$\_\_\_\_\_ Rent

- SPACIOUS ONE AND TWO BEDROOM WITH OPEN FLOOR PLANS
- EXPANSIVE WINDOWS
- DESIGNER KITCHENS
- ENERGY-STAR RATED APPLIANCES INCLUDING REFRIGERATOR, RANGE & DISHWASHER
- SEVERAL FLOOR PLANS TO CHOOSE FROM, WITH EXPOSED BRICK AND HARDWOOD FLOORS
- WASHER & DRYER CONNECTIONS IN EACH APARTMENT HOME

## FEES

- WATER, SEWER AND TRASH REMOVAL INCLUDED IN RENT
- \$25 APPLICATION FEE PER ADULT
- SECURITY DEPOSIT = 1 MONTHS RENT
- PET FEE- \$300 NON-REFUNDABLE & \$20 PER MONTH

DUE TO THE HISTORIC NATURE OF OUR BUILDING, FLOOR PLANS MAY VARY.



TWO BEDROOM / TWO BATH

\$\_\_\_\_\_ Rent