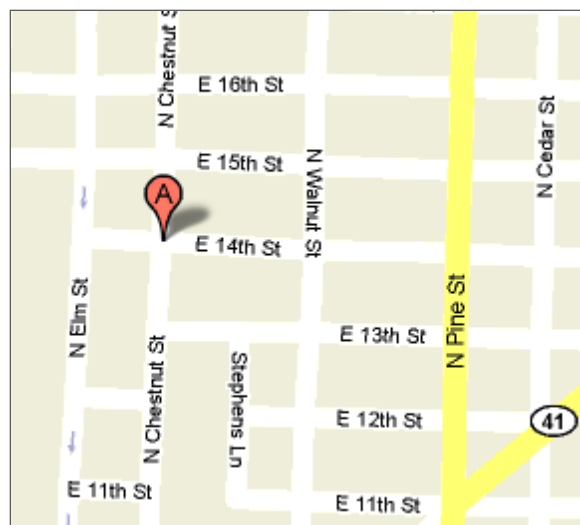




- ◆ LOCATED IN THE HEART OF LUMBERTON- CONVENIENT TO EVERYTHING!
- ◆ BEAUTIFUL, HISTORIC BUILDING TOTALLY RENOVATED!
- ◆ ONE & TWO BEDROOM APARTMENT HOMES RESERVED FOR THOSE AGE 55+
- ◆ SECURED ENTRY ACCESS
- ◆ ELEVATOR TO ALL FLOORS
- ◆ LAUNDRY FACILITIES
- ◆ OUTDOOR AREAS INCLUDING COURTYARD and GARDEN PLANTERS
- ◆ CLOSE TO DINING, SHOPPING, LIBRARY, PHARMACY, AND MORE
- ◆ 100% HANDICAPPED ACCESSIBLE
- ◆ 24 HOUR EMERGENCY MAINTENANCE
- ◆ PROFESSIONAL, ON-SITE MANAGEMENT STAFF
- ◆ HOUSING VOUCHERS ACCEPTED

Baker House
 Senior Apartment Community
 207 E. 14th Street
 Lumberton, NC 28358
 PH: (910) 272-8565
 FAX: (910) 272-9875
bakerhouse@epmsites.com



Located downtown Lumberton on 14th and Chestnut Street in the historical Baker Hospital Building.

Professionally Managed By:



1004 Bullard Court, Ste, 104
 Raleigh, NC 27615
 (919) 878-0522



www.excelpropertymanagement.com



Baker House

SENIOR HOUSING COMMUNITY



207 E. 14th Street

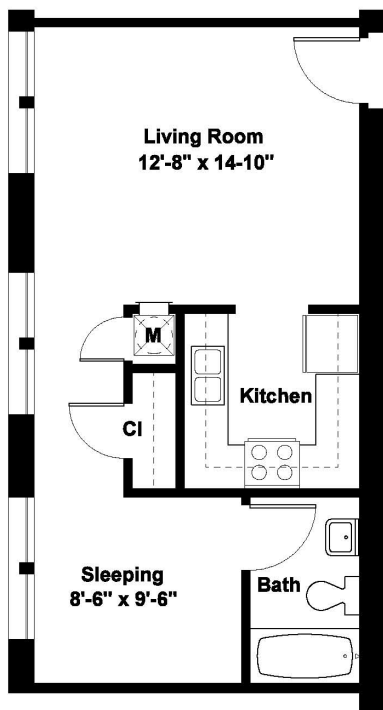
Lumberton, NC 28358

(910) 272-8565

bakerhouse@epmsites.com

TYPICAL ONE BEDROOM

445 SQ. FT.



FEES:

◆ MONTHLY RENT \$ _____

◆ SECURITY DEPOSIT \$ _____

◆ PET FEE \$ _____

(RESTRICTIONS APPLY)

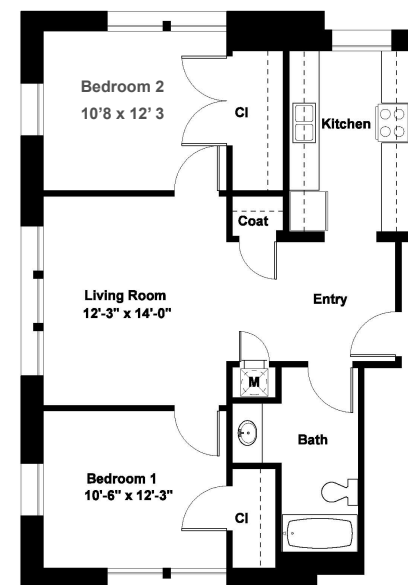
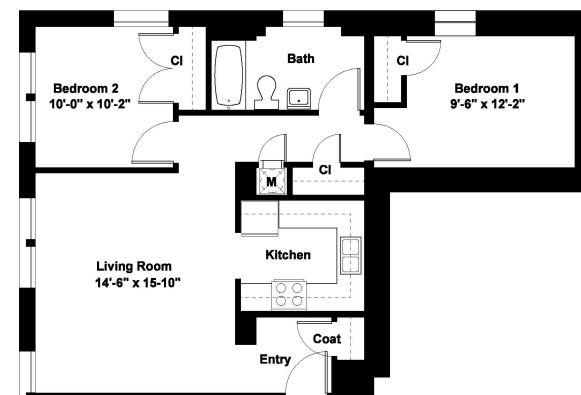
◆ WATER, SEWER & TRASH SERVICE INCLUDED IN MONTHLY RENT

APARTMENT FEATURES

- ◆ SPACIOUS ONE & TWO BEDROOM APARTMENT HOMES DESIGNED WITH CONVENIENCE IN MIND
- ◆ ENERGY EFFICIENT APPLIANCES : REFRIGERATOR WITH ICE MAKER, RANGE AND BUILT-IN MICROWAVE
- ◆ CARPET AND TILE FLOORS
- ◆ ENERGY EFFICIENT HEAT PUMP AND CENTRAL AC
- ◆ GRAB BARS IN BATHROOM
- ◆ EMERGENCY PULL CORDS IN BATHROOM AND BEDROOM
- ◆ LARGE CLOSETS
- ◆ COMPLETELY RENOVATED, HISTORIC BUILDING WITH LOTS OF CHARM!
- ◆ WHEELCHAIR ACCESSIBLE UNITS AVAILABLE
- ◆ AFFORDABLE HOUSING PROGRAM PERFECT FOR SENIORS ON A FIXED INCOME!

TYPICAL TWO BEDROOM

773 - 920 SQ. FT.



*Due to the historical nature of this building, actual floor plans and square footage may vary.