

LAKE RIDGE

COMMONS

Where Beauty Meets Comfort



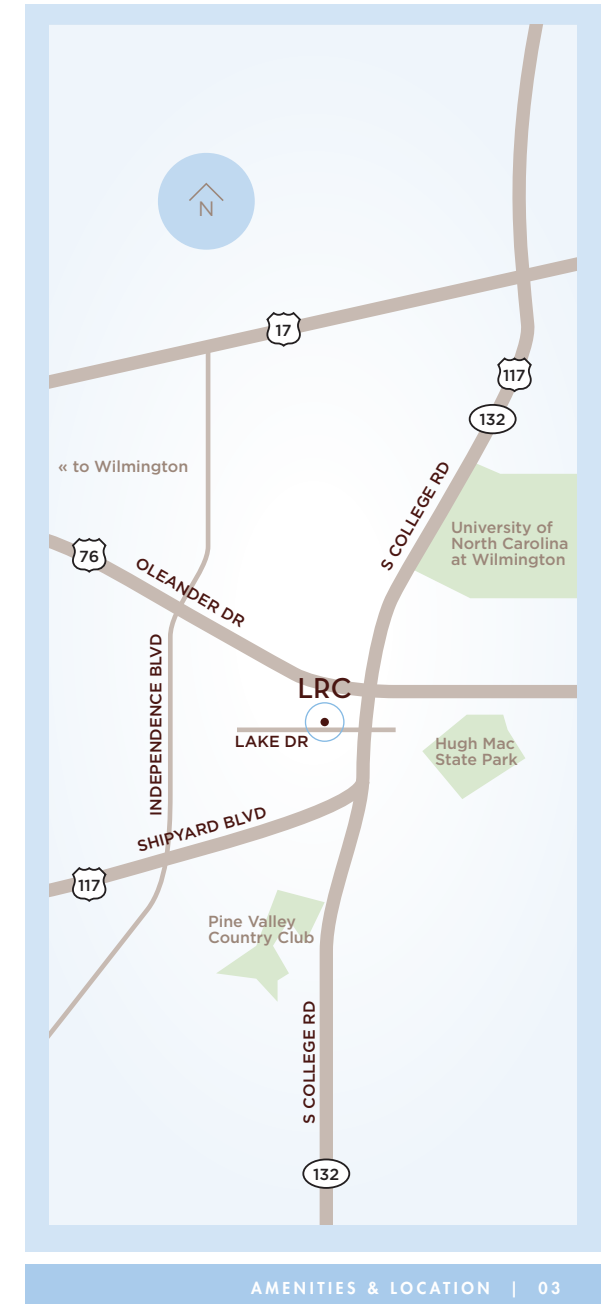
THE BEST OF CITY LIVING – ALL WITHIN REACH

Welcome to LAKE RIDGE COMMONS, an affordable community designed with serenity and convenience in mind. Located in a quiet, beautiful section of historic WILMINGTON near the city's center, LAKE RIDGE COMMONS offers spacious 1 and 2 bedroom apartment homes. Conveniently situated within close proximity to the city's full amenities, the new urban development is within walking distance to the SENIOR RESOURCE CENTER and HUGH MAC RAE PARK. The new community is an ideal place to call home because of its moderate, four-season climate, proximity to the historic preservation district, annual events such as WILMINGTON RIVERFEST and the AZALEA FESTIVAL, and numerous championship golf courses. Residents of LAKE RIDGE COMMONS are granted year round access to a myriad of recreational and cultural options.

DESIGNED FOR INDEPENDENT LIVING

Situated in the heart of WILMINGTON, NC, LAKE RIDGE COMMONS represents the pinnacle of living for those age 55 and better. Wilmington's rich history and premier location make it one of the most beautiful cities in the South. Imagine a community with genuine neighborhood charm complete with fragrant breezes, shady garden paths and tree-lined streets. This new urban development is an inviting place for residents to share lunch with friends, relax in the Community Clubhouse, or enjoy staying connected with family members and loved ones at the on-site computer center. LAKE RIDGE COMMONS affords residents daily comfort and convenience, allowing them to enjoy the best the community has to offer.

- GRAND SCREENED PORCH
- OUTDOOR GARDEN AREA & GAZEBO
- COMMUNITY CLUBHOUSE
- RESIDENT COMPUTER LEARNING CENTER WITH INTERNET ACCESS
- ELEVATOR AND SECURED ENTRY
- ON-SITE LAUNDRY FACILITIES
- ON-SITE MANAGEMENT
- 24 HOUR EMERGENCY MAINTENANCE
- COMPLIMENTARY LANDSCAPING & TRASH REMOVAL SERVICES

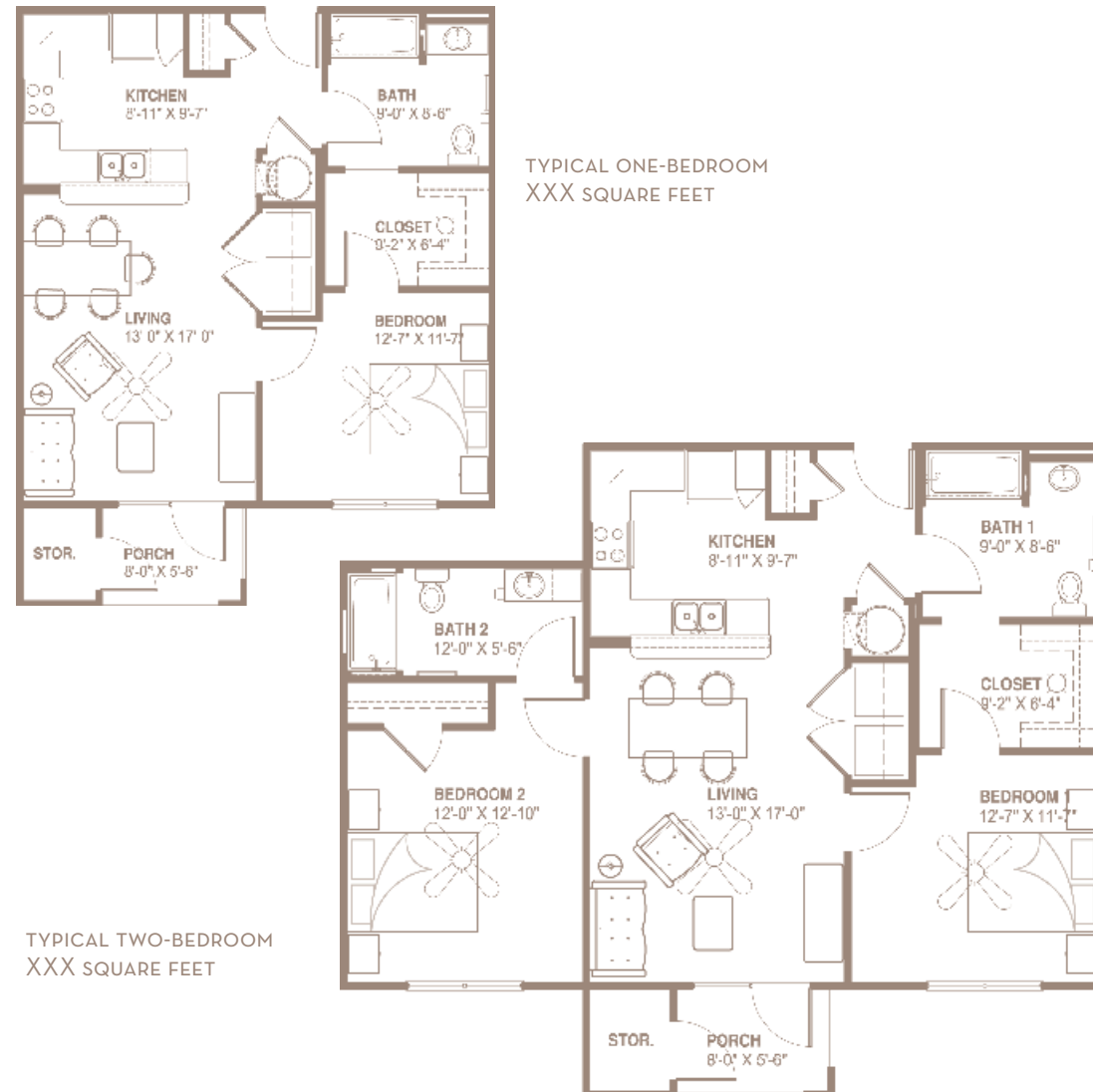
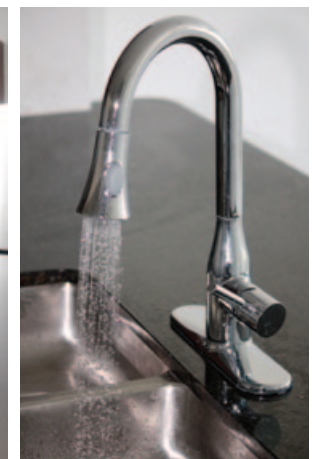
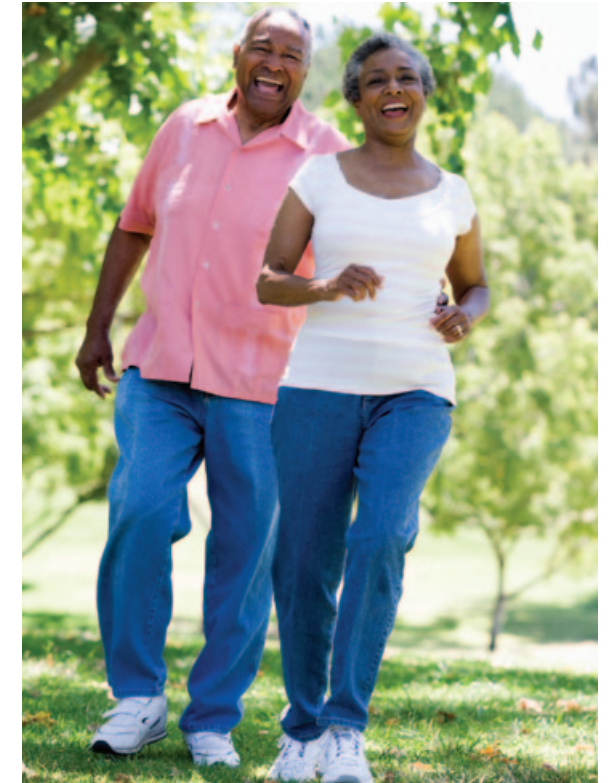




A WELL-APPOINTED COMMUNITY

What is so enriching at LAKE RIDGE COMMONS? Quite simply, the day-to day lifestyle. Residents can join in a full schedule of recreational and social activities to fulfill their interests. Aside from providing a plethora of options to fill a social calendar, LAKE RIDGE COMMONS residents also enjoy unparalleled services and amenities. Each home features thoughtful details and finishes including:

- OPEN FLOOR PLANS
- SPACIOUS KITCHEN WITH BREAKFAST BAR
- WASHER AND DRYER CONNECTION
- PRIVATE PATIO WITH ADDITIONAL STORAGE
- MONEY-SAVING, ENERGY-EFFICIENT APPLIANCE PACKAGE INCLUDING REFRIGERATOR, STOVETOP/OVEN, MICROWAVE, AND DISHWASHER
- WALK-IN CLOSET
- CENTRAL AIR CONDITIONING & HEATING
- HANDICAP ACCESSIBLE UNITS AVAILABLE



TYPICAL ONE-BEDROOM
XXX SQUARE FEET

TYPICAL TWO-BEDROOM
XXX SQUARE FEET

LAKE RIDGE COMMONS

4180 LAKE AVENUE
WILMINGTON, NORTH CAROLINA 28340

PHONE 910 111 1111 FAX 910 222 2222
lakeridge@carlisledevelopmentgroup.com??

or

lakeridgecommons@epmsites.com??

BUILDING STRONGER COMMUNITIES TOGETHER

With more than 80 affordable housing communities, Carlisle Development Group is a leader in creating quality homes for the way people live. We are proud to include Lake Ridge Commons among our many distinctive properties, and we invite you to become one of the thousands of residents who call a Carlisle community home. Call today for rental rates, qualification guidelines and other information.



CARLISLEDEVELOPMENTGROUP.COM



ALL APARTMENTS AT LAKE RIDGE COMMONS ARE OFFERED UNDER AFFORDABLE HOUSING GUIDELINES WHICH CAP MONTHLY RENTAL RATES BASED ON AREA MEDIAN INCOME. POTENTIAL RESIDENTS MUST MEET CERTAIN INCOME RESTRICTIONS IN ORDER TO APPLY. Oral representation cannot be relied upon as correctly stating the representations of the developer; for correct representation, make reference to the documents required by section 718-503, Florida Statutes, to be furnished by the developer to tenant. The developer reserves the right to change and/or alter price, materials, equipment, and design without prior notice. Total square footage includes balcony. Room dimensions and square footage are approximate.