

Come experience the perfect mix of Southern Charm and Modern Conveniences - this is exactly what Timber Ridge Apartment Homes has to offer! You start with the location that is close to just about everything, easy access to major highways and interstate, mix it with fantastic apartment homes and a community with lots of amenities as well as affordability and you've got the perfect recipe for comfort. Style. Design. Convenience...

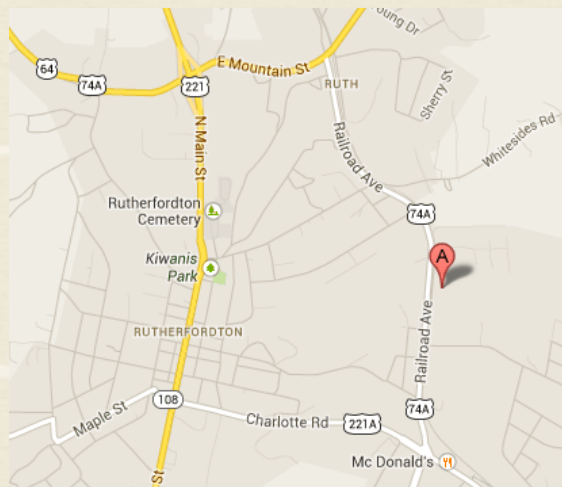
Timber Ridge

- ◆ Independent senior living community reserved for 55+
- ◆ Community clubhouse with screened porch sitting area
- ◆ Multi-purpose room with kitchen
- ◆ Computer learning center
- ◆ Laundry care center
- ◆ Raised garden planters
- ◆ Covered picnic shelter with grill
- ◆ Professional, on-site Management & 24 hr. emergency Maintenance

TIMBER RIDGE
190 HEARTWOOD LANE
SPINDALE, NC

PH: (828) 288-2787

TIMBERRIDGE@EPMSITES.COM



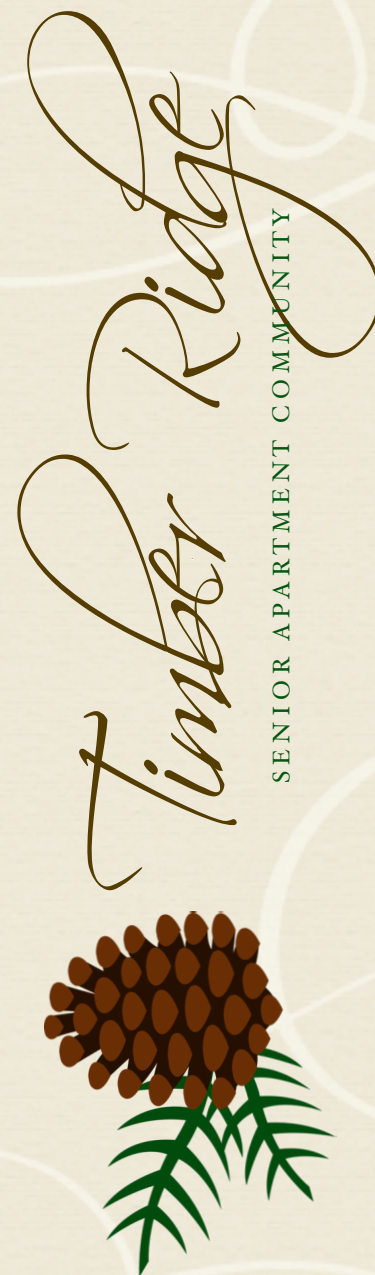
PROFESSIONALLY MANAGED BY



1004 Bullard Ct., Ste. 106
Raleigh, NC 27615
(919) 878-0522



www.excelpropertymanagement.com



Our apartment homes are designed for today's senior lifestyle, adding both style and convenience. We offer spacious rooms, easy lay-out, secluded laundry room, convenient kitchen, ample storage and when it's all said and done at the end of the day, step out onto your private covered porch and wind down. You deserve it.... and you deserve to make Timber Ridge your new home!

- ◆ Open floor plan
- ◆ Modern kitchen with pantry & pass-through window
- ◆ Private front porch & back patio
- ◆ Personal storage area
- ◆ Washer and dryer connections
- ◆ Central air and energy efficient heat pumps
- ◆ Handicap accessible
- ◆ Ceiling fans
- ◆ Emergency pull cords in each unit
- ◆ Grab bars in bathroom

STYLE. DESIGN. CONVENIENCE.

ONE BEDROOM / ONE BATH - 661 sq. ft.

RENT \$_____ per month

SECURITY DEPOSIT \$_____

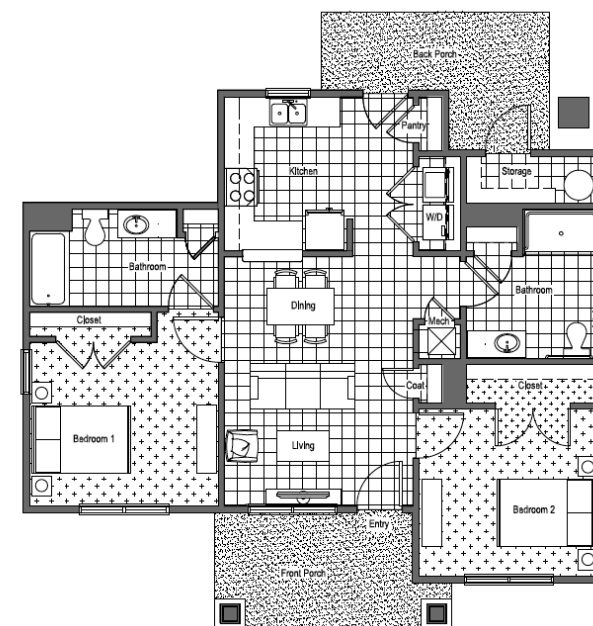
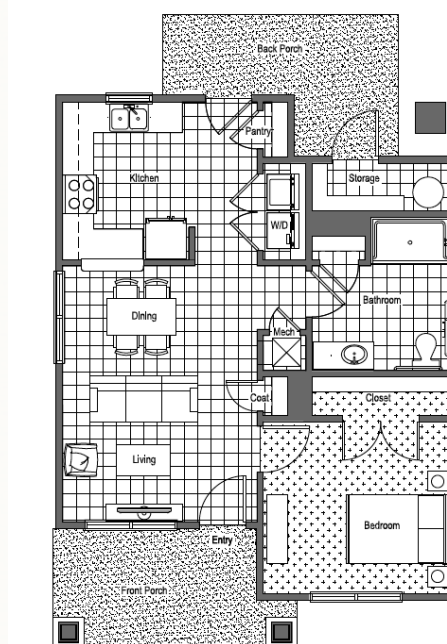
APPLICATION FEE \$_____

TWO BEDROOM / TWO BATH - 919 sq. ft.

RENT \$_____ per month

SECURITY DEPOSIT \$_____

APPLICATION FEE \$_____



To be eligible for an apartment at Timber Ridge Cottages a person must meet the following criteria:

- 55 years of age or older
- Gross annual income may not exceed established program income limits
- Must meet credit and criminal screening requirements

Rent includes monthly water, sewer and trash removal service