

Holly Tree Grove is Benson's hidden gem! An affordable housing, senior (55+) community, conveniently located near shopping, dining, banking and medical facilities- it offers convenience and comfort all at an affordable price!

Tucked away off of busy streets but minutes away from major thoroughfares, the location cannot be beat!

Come see what we have to offer today and you'll soon be calling Holly Tree Grove your new home!

Community Features

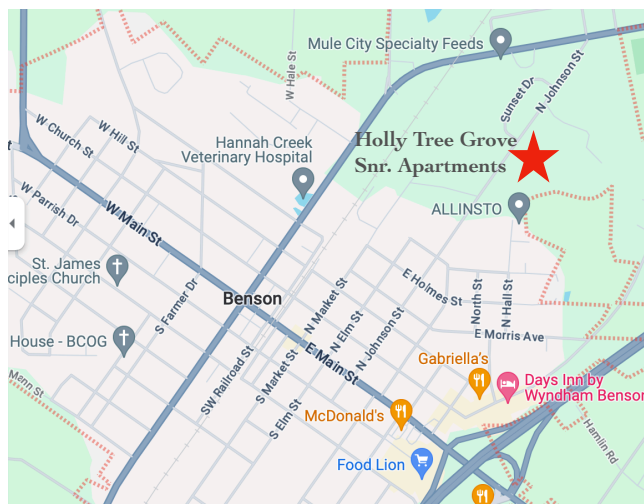
- ❖ Elevator
- ❖ Controlled access building
- ❖ Community clubhouse and office
- ❖ Fitness Center
- ❖ Computer room
- ❖ On-site laundry facility
- ❖ Gazebo
- ❖ On-site management and maintenance

HOLLY TREE GROVE
80 REDBERRY STREET
BENSON, NC 27504

PH: 919-640-9001

FAX: 919-640-9002

HOLLYTREEGROVE@EPMSITES.COM



Holly Tree Grove is located just off N. Johnson Street- next to the Benson Center for Active Adults, 1204 N. Johnson Street.

Professionally Managed By

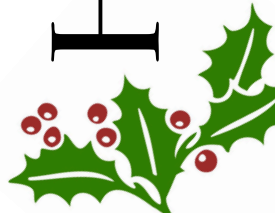


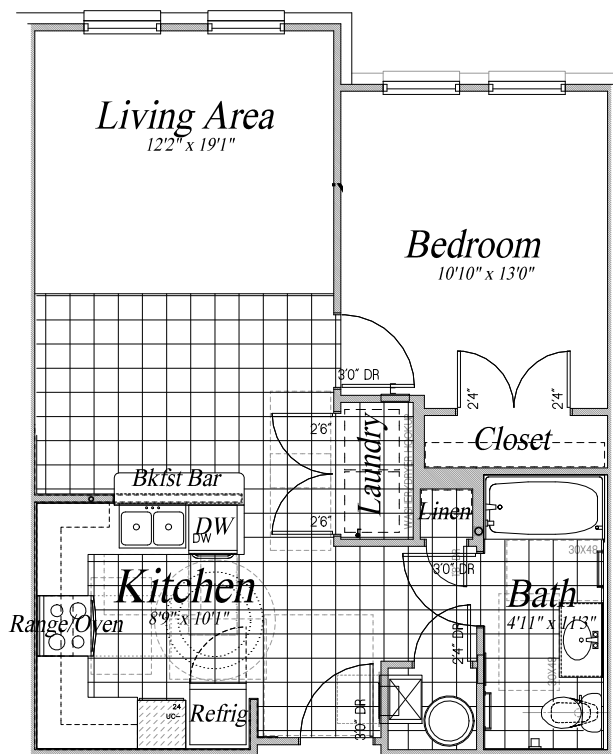
1004 Bullard Court, Ste. 106
Raleigh, NC 27615
(919) 878-0522



HOLLY TREE GROVE

SENIOR APARTMENT COMMUNITY





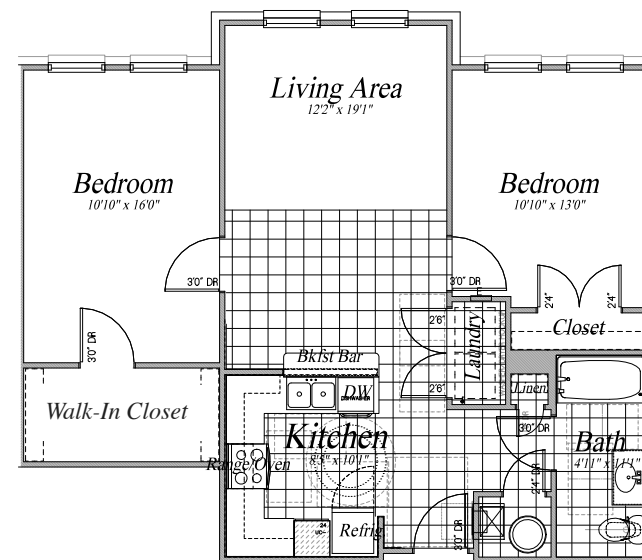
ONE BEDROOM 667 SQ. FT.

RENT \$ _____

SECURITY DEPOSIT \$ _____

Apartment Features:

- ◆ Open floor plan with resilient flooring and expansive windows
- ◆ Mini-blinds and ceiling fans throughout
- ◆ Energy efficient appliances including refrigerator, range and dishwasher
- ◆ Washer & Dryer connections
- ◆ Rent includes water, sewer and trash service
- ◆ We are a non-smoking community and smoking is not allowed in the units or on the patios
- ◆ Pet friendly- with restrictions
- ◆ Handicap accessible units



TWO BEDROOM 912 SQ. FT.

RENT \$ _____

SECURITY DEPOSIT \$ _____