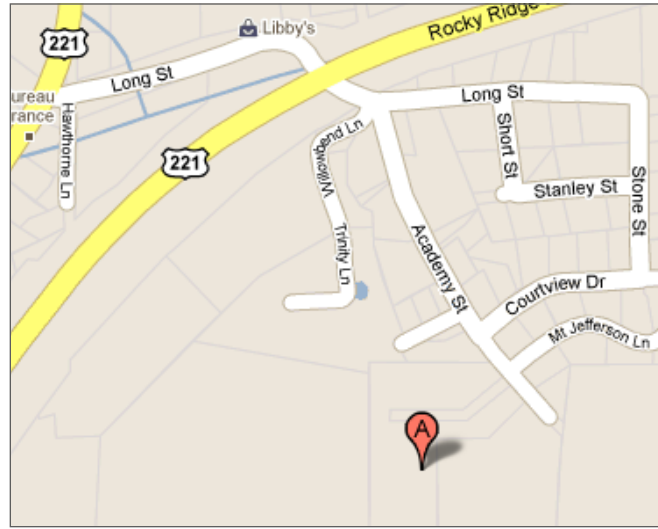


Nestled in the hills of Jefferson, NC, Jefferson View offers modern conveniences, fantastic location and spectacular mountain views! Relax on your private patio or balcony while enjoying breathtaking views of the Blue Ridge Mountains or take advantage of our outdoor recreation areas- either way you will love the lifestyle of Jefferson View! We offer all this and still remain affordable... isn't it time you came home to Jefferson View?



DIRECTIONS:

From Hwy. 221-South, turn right on Long Street, go 1 block and turn right onto Academy Street. Jefferson View is located at the top of the hill on the right.

PROFESSIONALLY MANAGED BY



1004 BULLARD COURT, STE. 106
RALEIGH, NC 27615
(919) 878-0522



Jefferson View

APARTMENT HOMES



115 JEFFERSON VIEW LANE
JEFFERSON, NC 28640

336-846-1333

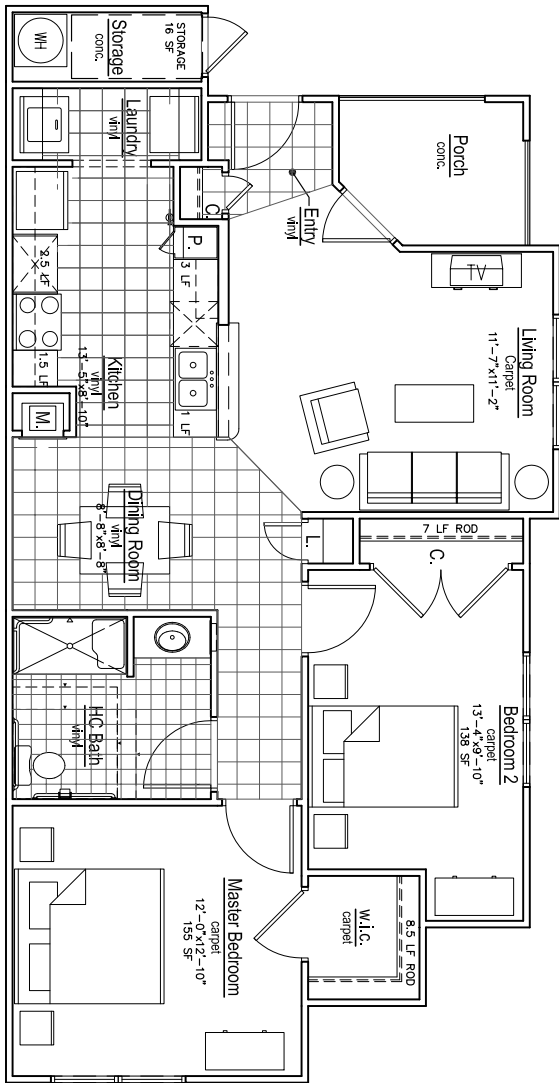
JEFFERSONVIEW@EPMSITES.COM

APARTMENT FEATURES

- Well-appointed two and three bedroom floor plans
- Generous kitchen with refrigerator, range, dishwasher and disposal as well as pantry and breakfast bar
- Washer and Dryer connections
- Large walk-in closets
- Spacious & private covered porch
- Easy care flooring in kitchen, dining area and bathrooms
- Wall-to-wall carpet in living areas and bedrooms
- Energy-efficient heat pump for central heat and air

COMMUNITY FEATURES

- Community Room / Clubhouse
- Computer Learning Center
- Playground / Tot Lot
- Laundry Care Center
- Picnic Area with Grills
- Horseshoe Pit
- Vending Area
- 24 Hour Emergency Maintenance
- Friendly, Professional On-site Management



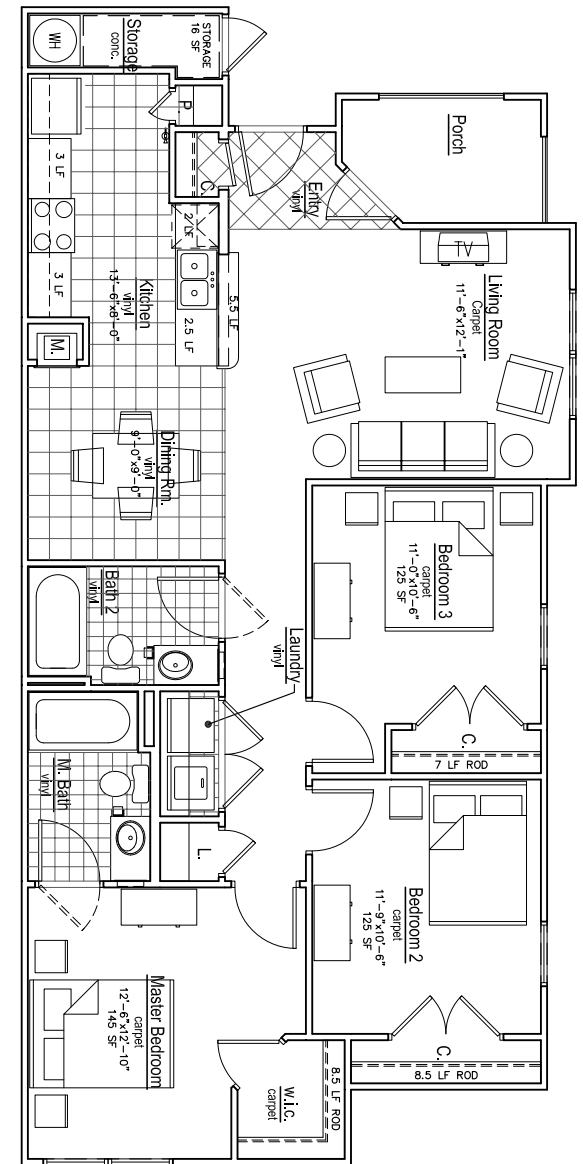
TWO BEDROOM/ TWO BATH

975 SQ. FEET

RENT \$ _____

DEPOSIT \$ _____

APPLICATION FEE \$ _____



THREE BEDROOM/ TWO BATH

1171 SQ. FEET

RENT \$ _____

DEPOSIT \$ _____

APPLICATION FEE \$ _____