

Crowell Square Apartments is Asheville's hidden gem; conveniently located near shopping, dining, banking and medical facilities- it offers convenience and comfort all at an affordable price!

Tucked away off of busy streets but minutes away from major thoroughfares, the location cannot be beat!

Community amenities include:

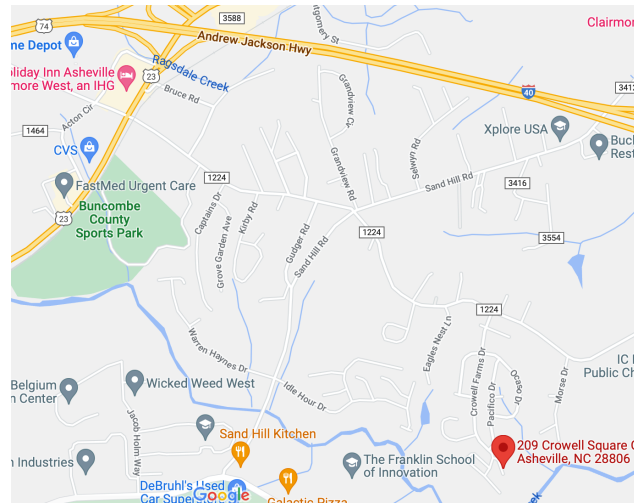
- Secured entry
- Elevator to all floors
- Computer Center/Library
- Fitness Center
- Game/Craft room
- On-site Laundry
- And more!

Come see what we have to offer and soon you will want to make Crowell Square your new home!

CROWELL SQUARE
209 CROWELL SQUARE COURT
ASHEVILLE, NC 28806

PH: 828-665-1417

CROWELL SQUARE@EPMSITES.COM

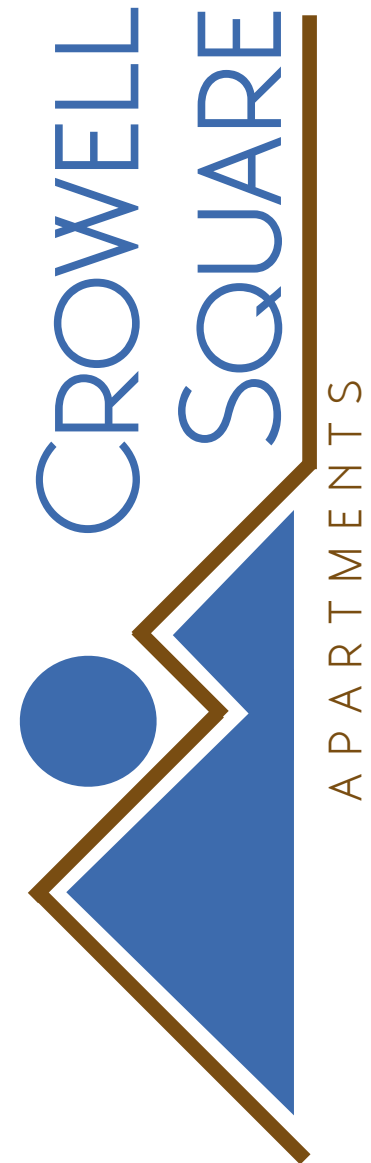


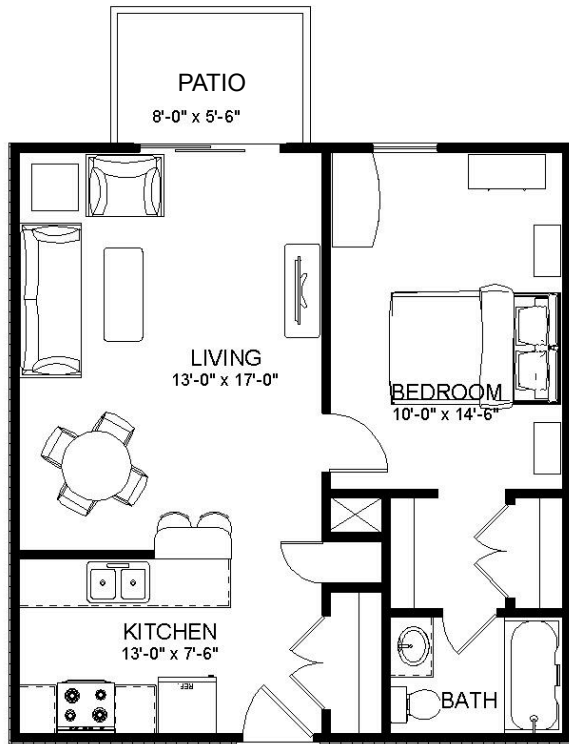
From I-40 take the Enka-Candler exit and turn right onto Smokey Park Highway. Take a right just past McDonalds onto Acton Circle. Go past Home Depot to 4-way stop sign and make left onto Sand Hill School Rd., continue through next 4-way intersection onto Oak View Rd.. Continue until you see Crowell Farms on right- then make a right and follow to the end, Crowell Square will be on the left.

Professionally Managed By



1004 Bullard Court, Ste. 106
Raleigh, NC 27615
(919) 878-0522





ONE BEDROOM 600 SQ. FT.

RENT \$_____

SECURITY DEPOSIT \$_____

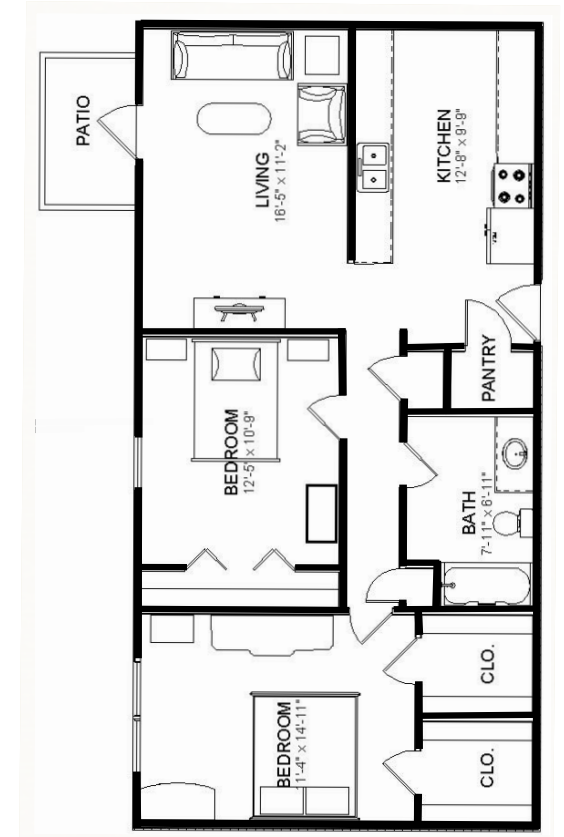
OUR SPACIOUS FLOOR PLANS INCLUDES:

- PRIVATE PATIO OR BALCONY
- ENERGY EFFICIENT APPLIANCES INCLUDING REFRIGERATOR & RANGE,
- PANTRY
- RENT INCLUDES WATER, SEWER AND TRASH SERVICE
- WE ARE A NON-SMOKING COMMUNITY AND SMOKING IS NOT ALLOWED IN THE UNITS OR ON THE PATIOS
- HANDICAP ACCESSIBLE UNITS AVAILABLE

PETS

PETS ARE ALLOWED WITH MANAGEMENT PRE-APPROVAL:

- UP TO 25LBS.
- FEES APPLY
- DOGS, CAT, BIRDS AND FISH ONLY



TWO BEDROOM 800 SQ. FT.

RENT \$_____

SECURITY DEPOSIT \$_____