



Staunton lies in the Shenandoah Valley between the Blue Ridge and Allegheny Mountains. It offers amazing views, a bustling cultural scene while maintaining that small, hometown feel.

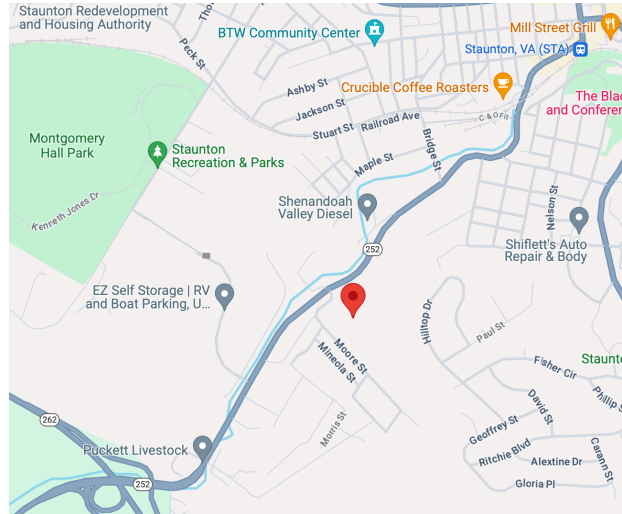
In the middle of it all, is Middlebrook Trace. A brand new, beautiful apartment community offering well-appointed two and three bedroom apartment homes.

Middlebrook Trace is part of an affordable housing program that allows us to keep rents reasonable, all while offering all the modern conveniences designed to make life easier.

Middlebrook Trace lies conveniently off Middlebrook Avenue and provides easy access to highways and interstates.

Visit Middlebrook Trace today and see why you will want to call it your new home!

Middlebrook Trace Apartments
601 Moore St., Ste. 1000
Staunton, VA 24401
PH: (540) 496-7100
FAX: (540) 496-7101
middlebrooktrace@epmsites.com



DIRECTIONS: We are located just off Middlebrook Avenue (Rt. 252), which is a main thoroughfare, easily accessed from the downtown area or Woodrow Wilson Parkway.

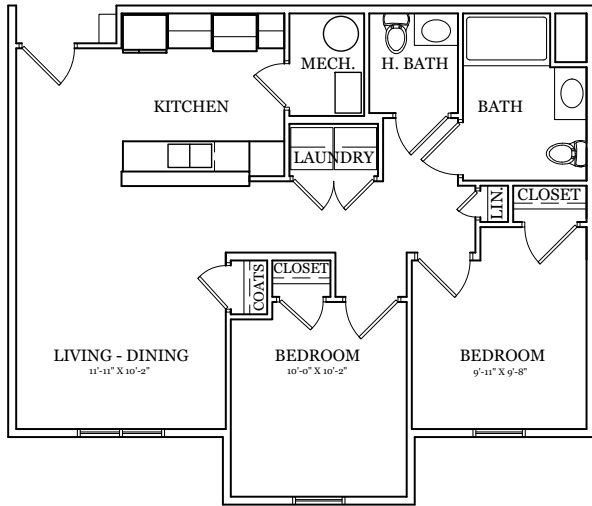
Professionally Managed By



1004 Bullard Court, Ste. 106
Raleigh, NC 27615
(919) 878-0522



601 Moore Street Suite 1000 • Staunton VA 24401 • PH: (540) 496-7100



TWO BEDROOM/ ONE & HALF BATH – 1021 SQ. FT.

RENT \$ _____

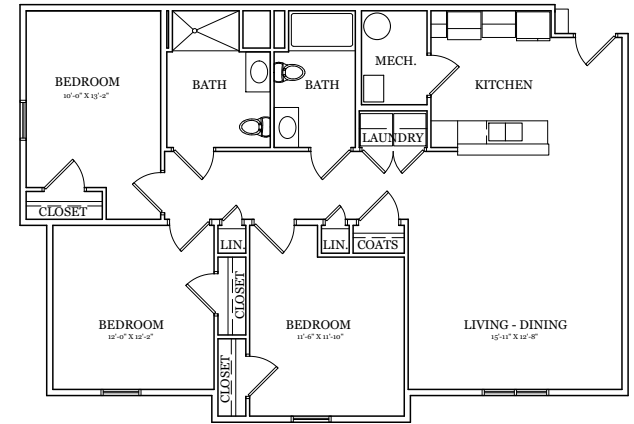
DEPOSIT \$ _____

APPLICATION FEE \$ _____

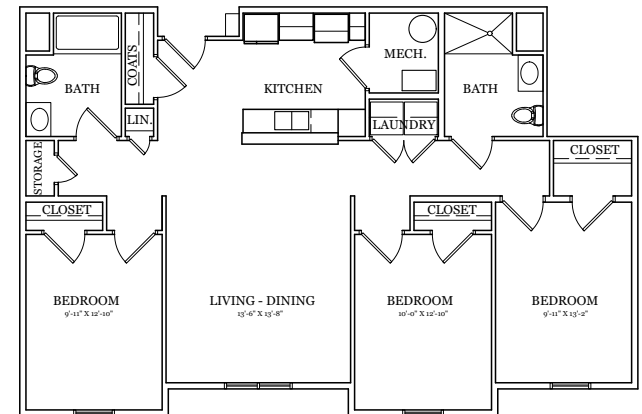
Apartment Features

- Spacious, open floor plans
- Kitchen offers refrigerator, range, dishwasher and breakfast bar
- Laundry connections in unit
- Free wi-fi in units
- Built in USB ports
- Easy-to-care vinyl plank flooring in high traffic areas
- Mini blinds throughout
- One and 1/2 bath in two bedroom floor plan, two full baths in three bedroom floor plan
- Rent includes trash service
- Residents pay electric, water and sewer
- No smoking in apartment homes
- Pets allowed with additional applications and fees

The Shenandoah



The Verona



THREE BEDROOM/ TWO BATH – 1538 SQ. FT.

RENT \$ _____

DEPOSIT \$ _____

APPLICATION FEE \$ _____